

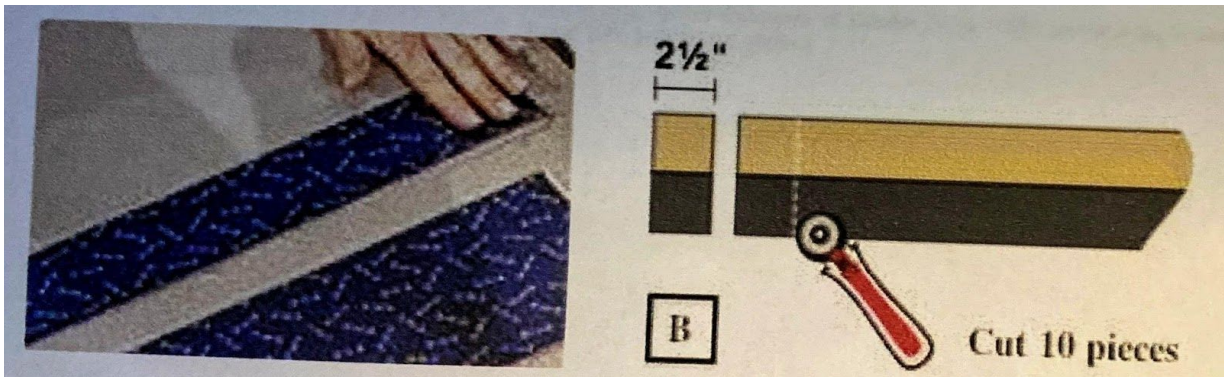
BLOCK NUMBER 1: Jacob's Ladder

These directions are based on those shared by Kay Collins at a June 2014 River Bend Quilt Guild Meeting. So we are giving her credit and thanks!

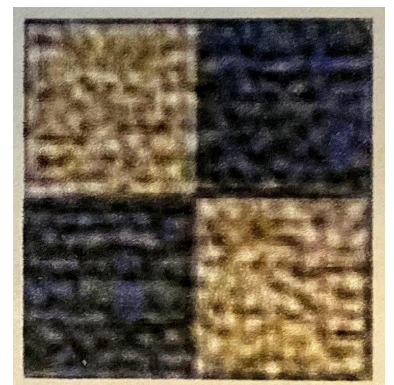
- These directions are for making a 12-inch square finished block.
- Use $\frac{1}{4}$ inch seams throughout.
- You will need a dark and a light fabric. In the example we used dark blue and cream.



FIRST: Make FIVE 4-patch units. A quick way is to use strips as described below.

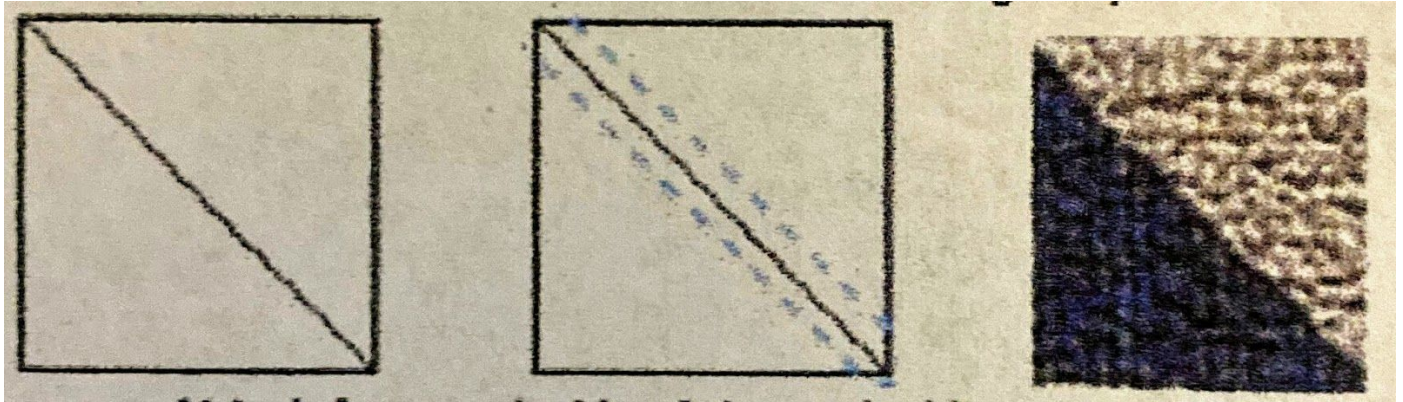


- Cut ONE $2\frac{1}{2}$ inch strip about 26 inches long from a DARK fabric.
- Cut ONE $2\frac{1}{2}$ inch strip about 26 inches long from a LIGHT fabric.
 - If using fat quarters cut TWO strips from each fat quarter.
- Sew the light and dark strip together and press the seam allowance to the dark.
- Cut TEN $2\frac{1}{2}$ inch wide pieces from the strip(s). Each one will be a rectangle measuring $2\frac{1}{2}$ x $4\frac{1}{2}$. If they are not, STOP and square up or fix now!
- Sew the pieces together, nesting the seams together to help get an accurate corner on the square. You now have FIVE squares that measure $4\frac{1}{2}$ inches on each side. Square up if needed.

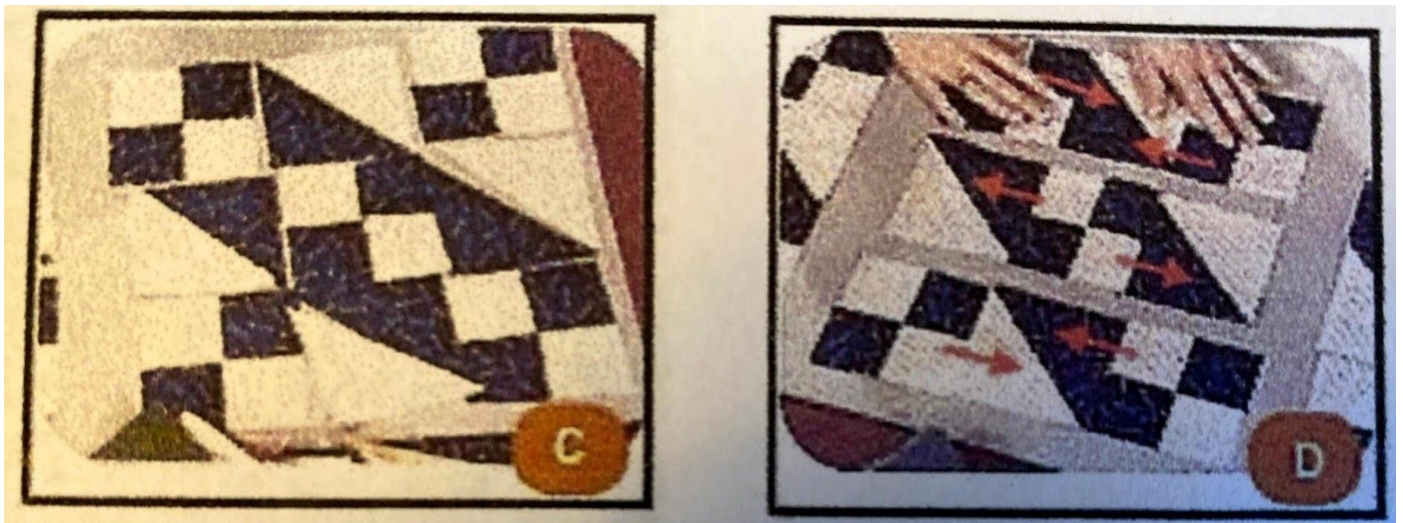


SECOND: Make FOUR Half-Square Triangle Units.

- A. Cut TWO 5 ¼ inch square of DARK fabric.
- B. Cut TWO 5 ¼ inch square of LIGHT fabric.
- C. Draw a line on each LIGHT square diagonally. Draw it on the wrong side. You need to be able to see it when sewing. Use any kind of marker as the line will be within the seam.
- D. Lay a light and a dark square together with the right sides together.
- E. Sew a seam ¼ inch away from the line on BOTH sides of the line. (If you absentmindedly sew on the line, don't bother to pick it out. Just go ahead and sew the lines you need!)
- F. Cut on the line and press the square open with the seam toward the dark fabric.
- G. The square needs to be 4 ½ inches square. Trim it to that measurement.



THIRD: ARRANGE THE UNITS AS SHOWN IN THE PICTURE. THIS IS THE TRICKY PART!



- A. Sew the units in row one together. Press both seams to the middle as shown by red arrows in picture above. Do the same for row three.
- B. Sew the units in row two together and press the seams toward the outside half square units, as shown.
- C. Sew the rows together. As you do it, nest and match the seams.
- D. The block will measure 12 ½ inches and will finish at 12 inches.